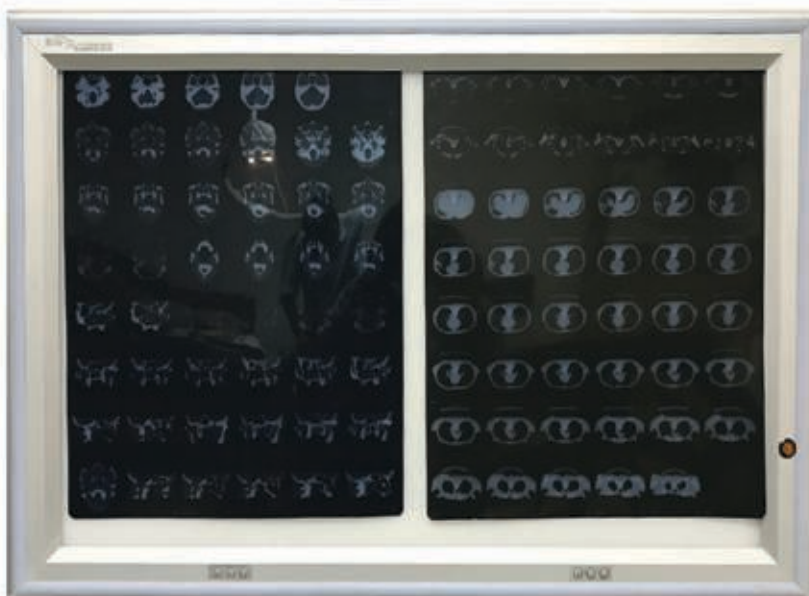




## Flush Mounted L.E.D. X Ray Viewer



We have developed the flush mounted L.E.D X-ray viewer which can be sealed into the wall of the operation theatre especially for modular operation theatre in order to maintain a seamless design hence maintaining a clean & sterile environment

### Specifications

Parameter		Specifications
Dimensions (mm)	Frame (L x H x T)	825x530x29
	Viewing Area (W x H)	736x 440
Power Consumption		30W
Light Source		LED
Power Supply Input		AC100-240V, 50 Hz
Surface Brightness (LUX)		>10,000
Colour Temperature		6500K

